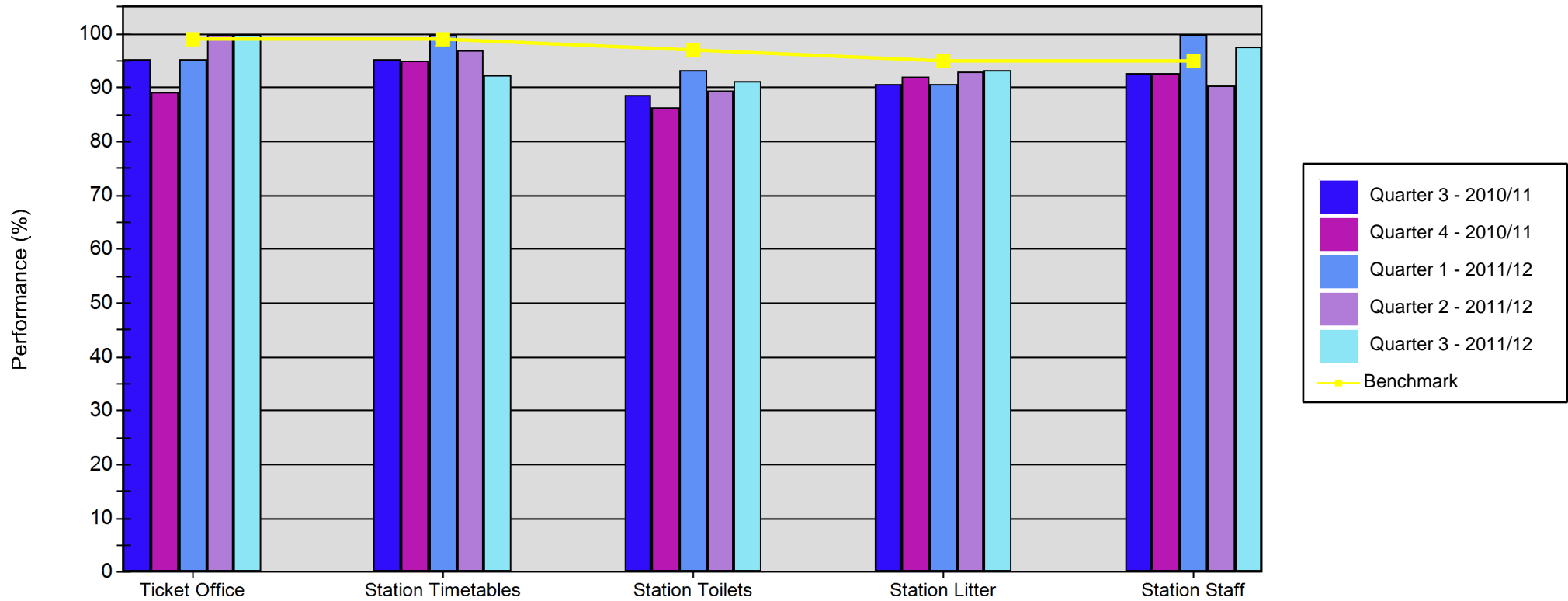


Quarterly SQUIRE Performance Report

Line of Route: Edinburgh- Aberdeen/ Dyce



	Ticket Office	Station Timetables	Station Toilets	Station Litter	Station Staff
Quarter 3 - 2010/11	95.24	95.45	88.57	90.71	92.86
Quarter 4 - 2010/11	89.29	95.10	86.43	92.21	92.86
Quarter 1 - 2011/12	95.24	100.00	93.33	90.71	100.00
Quarter 2 - 2011/12	100.00	96.97	89.52	92.90	90.48
Quarter 3 - 2011/12	100.00	92.42	91.26	93.44	97.62
Benchmark	99.00	99.00	97.00	95.00	95.00