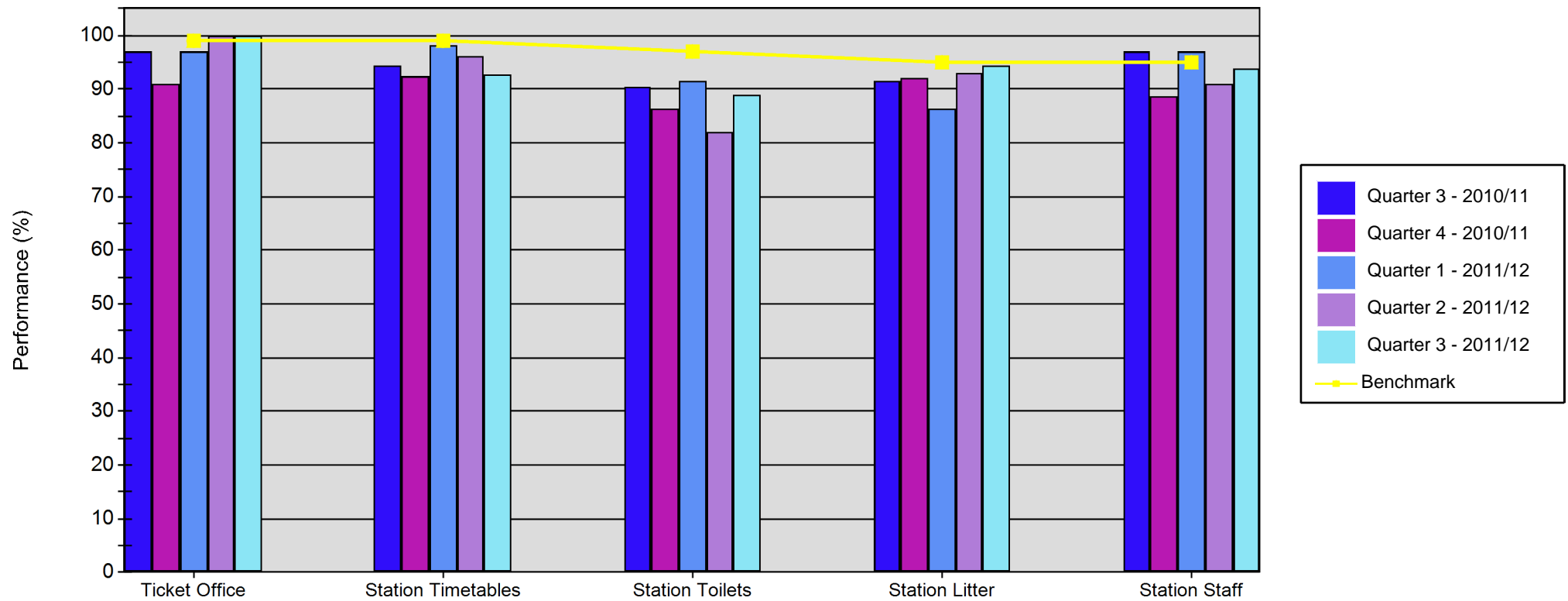


# Quarterly SQUIRE Performance Report

## Line of Route: Glasgow - Aberdeen/Dyce



	Ticket Office	Station Timetables	Station Toilets	Station Litter	Station Staff
Quarter 3 - 2010/11	96.97	94.44	90.48	91.67	96.97
Quarter 4 - 2010/11	90.91	92.50	86.44	92.18	88.64
Quarter 1 - 2011/12	96.97	98.15	91.67	86.34	96.97
Quarter 2 - 2011/12	100.00	96.30	82.14	92.90	90.91
Quarter 3 - 2011/12	100.00	92.59	89.11	94.54	93.94
<b>Benchmark</b>	99.00	99.00	97.00	95.00	95.00