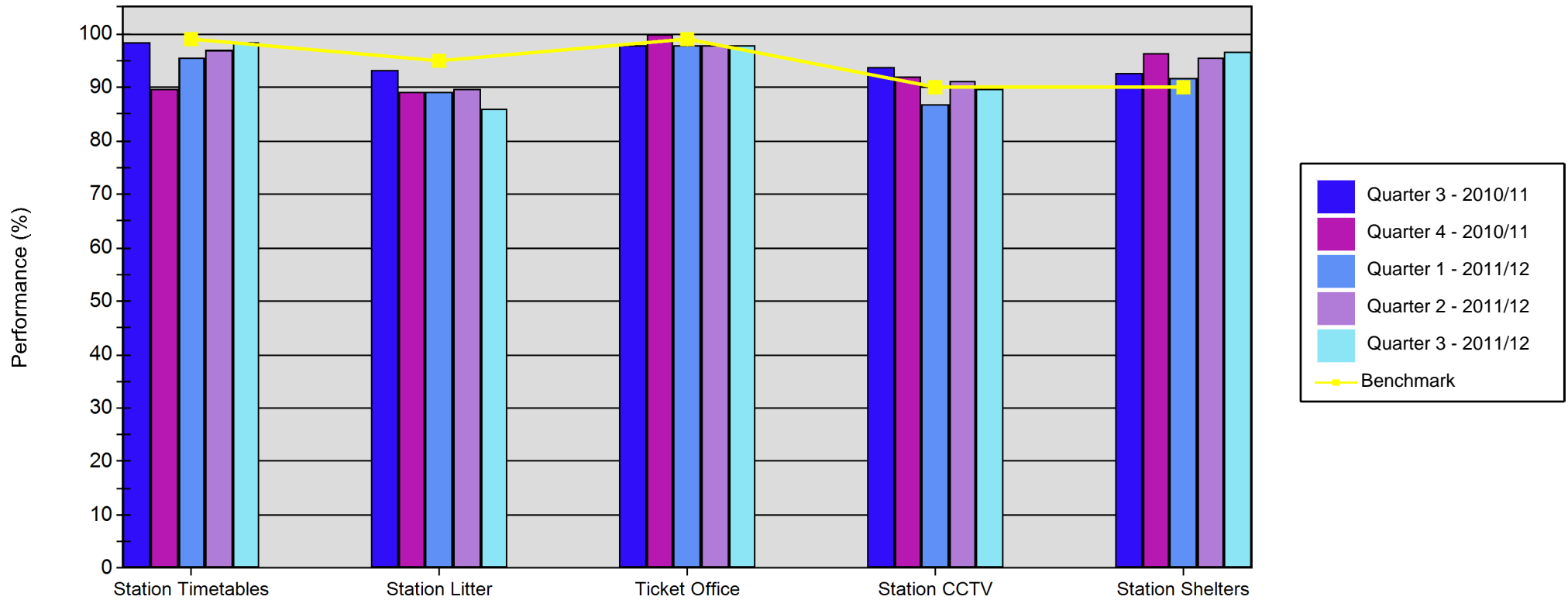


Quarterly SQUIRE Performance Report

Line of Route: Glasgow- Springburn/Airdrie/ Drumgelloch



	Station Timetables	Station Litter	Ticket Office	Station CCTV	Station Shelters
Quarter 3 - 2010/11	98.48	93.20	97.92	93.94	92.73
Quarter 4 - 2010/11	89.82	89.17	100.00	92.19	96.52
Quarter 1 - 2011/12	95.65	89.10	97.92	86.96	91.80
Quarter 2 - 2011/12	97.10	89.67	97.78	91.30	95.57
Quarter 3 - 2011/12	98.55	85.90	97.78	89.86	96.83
Benchmark	99.00	95.00	99.00	90.00	90.00